

Tech Tidbits



TIPS & TRICKS

~Check out the Shady Side Academy EdTech Website~

<http://ssaedtech.weebly.com/>

This website will be utilized as a landing place for you to reference after trainings and to peruse when looking for technology integration information and materials.

APPS & ADD-ONS THAT MAKE LIFE EASIER

Diigo

Save, tag, highlight, & organize all your bookmarks for easy access from any device.

<https://www.diigo.com>

Pocket

The Pocket add-on creates an easy way to save articles, videos, or pretty much anything into your “pocket” for easy viewing later (even offline). You can add Pocket to your web browser or use it right from inside many apps. Pocket is a great resource for faculty & students.

<http://bit.ly/pockethelp>

Google Research Tool

Google’s research tool was added to Google Docs in order to allow users the ability to perform searches for web resources from within a document. While in a Google Doc, you can click on the **Tools** menu & drop down to **Research**. From the Google search window you can choose the type of results you want, and you can even quickly cite the sources you choose to use. [Click here](#) for detailed directions.

*Did you
know?*



Educators can apply for a free Animoto Plus account for use in the classroom.

Animoto is an awesome resource for creating videos & presentations in minutes.

Click the link below to find out more.

<https://animoto.com/education/classroom>

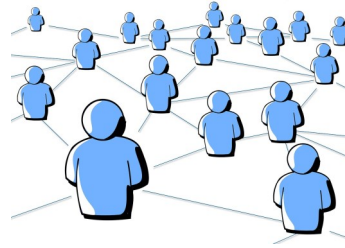


CONNECTING & COLLABORATING

Google Apps

All SSA faculty, staff, and students have Google for Education accounts that are synced with your SSA email. This gives you access to all the phenomenal Google resources (except gmail).

<http://learn.googleapps.com/>



Check out Google Drive for an easy way to create, share, and work collaboratively on documents, presentations, & spreadsheets.

<http://learn.googleapps.com/products/quickstart/#section-5>

*Because educators are awesome, Google Education accounts have unlimited storage!!!

“Information becomes a commodity because it’s at our fingertips—we no longer have to teach information, we have to teach how to convert it to intelligences.”
#EducationOnAir

Google accounts are synced with the school network accounts.
*Passwords can only be changed by changing your school network password on campus.
*If you like your password but Google isn’t working right —Log in to a campus computer—change your password—then, change the password right back to the one you like. The act of “changing” is what “fixes” the sync.
*New students & anyone who had issues last year will have to login to a campus computer & change their network password before using Google.

Teacher Spotlight

I would love to use this area of the newsletter to showcase all the wonderful ways faculty and students at SSA are utilizing technology throughout instruction and learning. Please let me know what awesome things are going on in your classroom or what things you may observe around you. This can be anything from a cool resource you’ve tried, a great way technology has improved a lesson or assignment in your class, to an “aha” moment you observed and want to share.

Remember- it may not seem major to you but sharing could impact another classroom in an amazing way.

